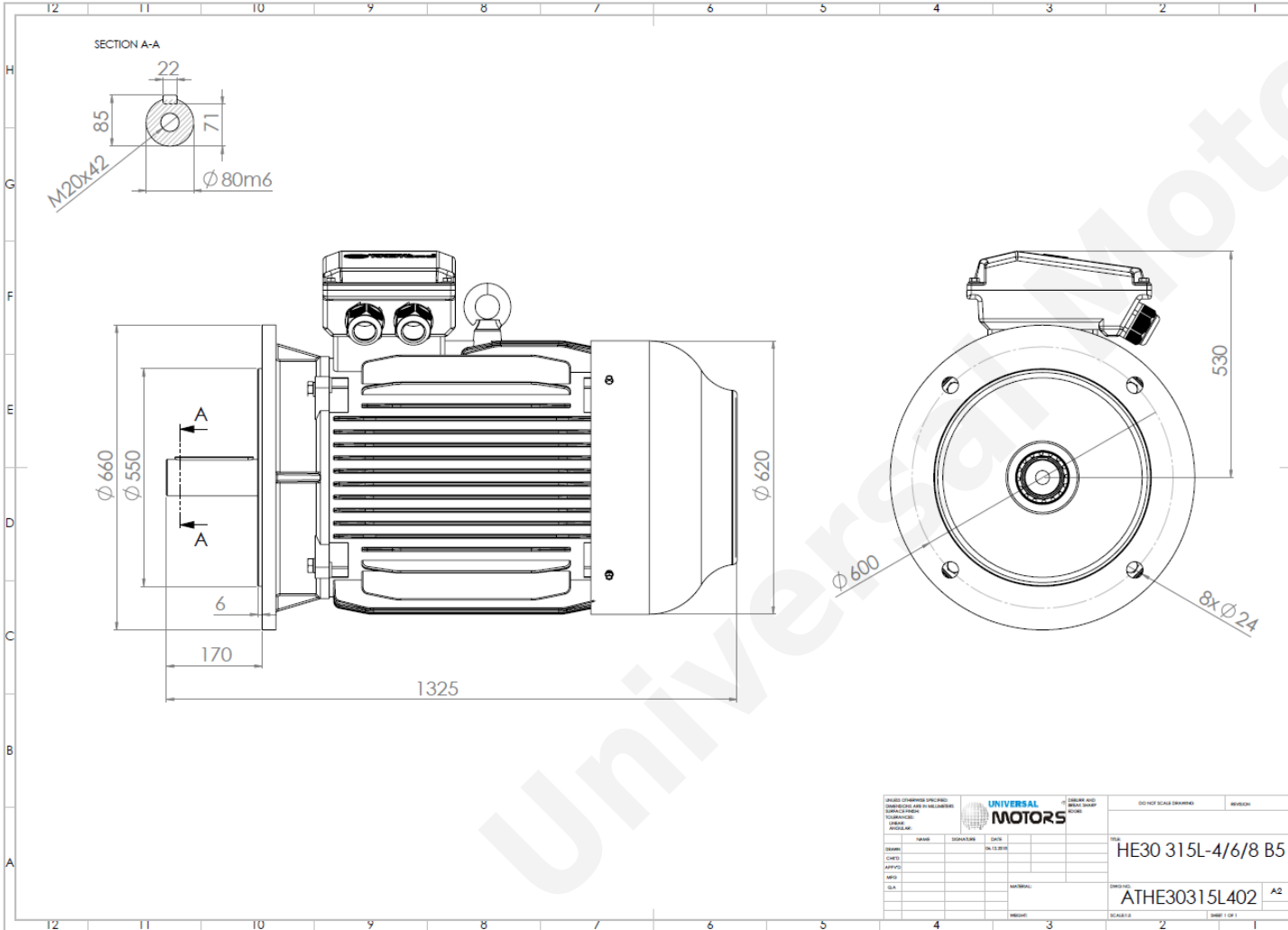




# TECHNICAL DATA

Three Phase Electric Motors - Cast Iron Frame  
 HE30 315L-4 IE2  
 160 kW / 220 Cv  
 1480 RPM



Motor type:	<b>HE30 315L-4 IE2</b>
Output:	<b>160 kW / 220 Cv</b>
Speed (min <sup>-1</sup> ):	<b>1480 RPM</b>
Frequency:	<b>50 Hz</b>
Voltage:	<b>400 V</b>
Current:	<b>273 A</b>
Power factor (Cos Ø):	<b>0.89</b>
Poles:	<b>4</b>
Insulation class:	<b>F</b>
Temperature rise Class:	<b>B</b>
Efficiency 50%:	<b>94.0 %</b>
Efficiency 75%:	<b>95.4 %</b>
Efficiency 100%:	<b>94.9 %</b>
Torque:	<b>1032 N.m</b>
Tstarting/Tnominal:	<b>2.0</b>
Istarting/Inominal:	<b>7.1</b>
Tmaximum/Tnominal:	<b>2.2</b>
Noise:	<b>77 Db(A)</b>
Weight:	<b>1053 Kg</b>
Bearing DE:	<b>NU 319</b>
Bearing NDE:	<b>6319 C3</b>

UNIVERSAL MOTORS		DO NOT SCALE DRAWING		REVISION
DESIGN	NAME	ORGANIZATION	DATE	FILE
CHECK			04.12.2016	HE30 315L-4/6/8 B5
APPROV				
MFG				
SLA				
				ATHE30315L402 A2

**Regime - S1**

**Altitude - 1000m**

**Environment Temperature - 40°C**

**CONTACTS:**

UNIVERSAL MOTORS      Tel: +351 252 299 080  
 Rua de São Brás,745      Fax: +351 252 299 089  
 4480-782 VILA DO CONDE      Mail: [geral@universalmotors.pt](mailto:geral@universalmotors.pt)

\* References applied only in the UK